

# TEAM TAILORING

BRINGING TEAMS TOGETHER

INFINITY INC.





# SWAPPING STRIPES FOR SUITS

Ensure that squads not only look good once the final whistle has blown, but also act as an elegant reminder that the players are just as much a team off the pitch as they are on.





# FEATURED COLLECTIONS

Tailoring designed for the  
first-team squad, management  
and coaching staff





## FEATURED COLLECTIONS

# ENVEE

## COLLECTION

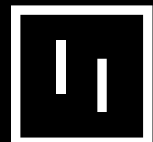
The Envee Collection is the most advanced ultra stretch tailoring engineered for men and women using an ultra tech stretch Poly/Visc/Lycra that stretches and moves with the wearer for maximum comfort at work.

### How the fabric performs

- ✔ Comfortable
- ✔ Sustainability
- ✔ Durable
- ✔ Easy to wash and look after

### Fabric Colours

- ✔ Black
- ✔ Navy
- ✔ Grey Dot
- ✔ Navy Dot







## FEATURED COLLECTIONS

# EVERYONE

## COLLECTION

This superb one way stretch fabric is designed to be worn every day, everywhere by everyone. It is truly durable and a popular choice for a wide range of industries.

### How the fabric performs

- ✓ Comfortable
- ✓ Sustainability
- ✓ Durable
- ✓ Easy to wash and look after

### Fabric Colours

- ✓ Black
- ✓ Navy
- ✓ Charcoal





## FEATURED COLLECTIONS

# EVOLUTION

## COLLECTION

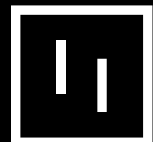
This hard wearing sustainable fabric made from recycled polyester, wool and lycra is currently worn by tens of thousands of happy teams across multiple sectors.

### How the fabric performs

- ✔ Comfortable
- ✔ Sustainability
- ✔ Durable
- ✔ Easy to wash and look after

### Fabric Colours

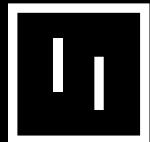
- ✔ Black
- ✔ Navy
- ✔ Charcoal



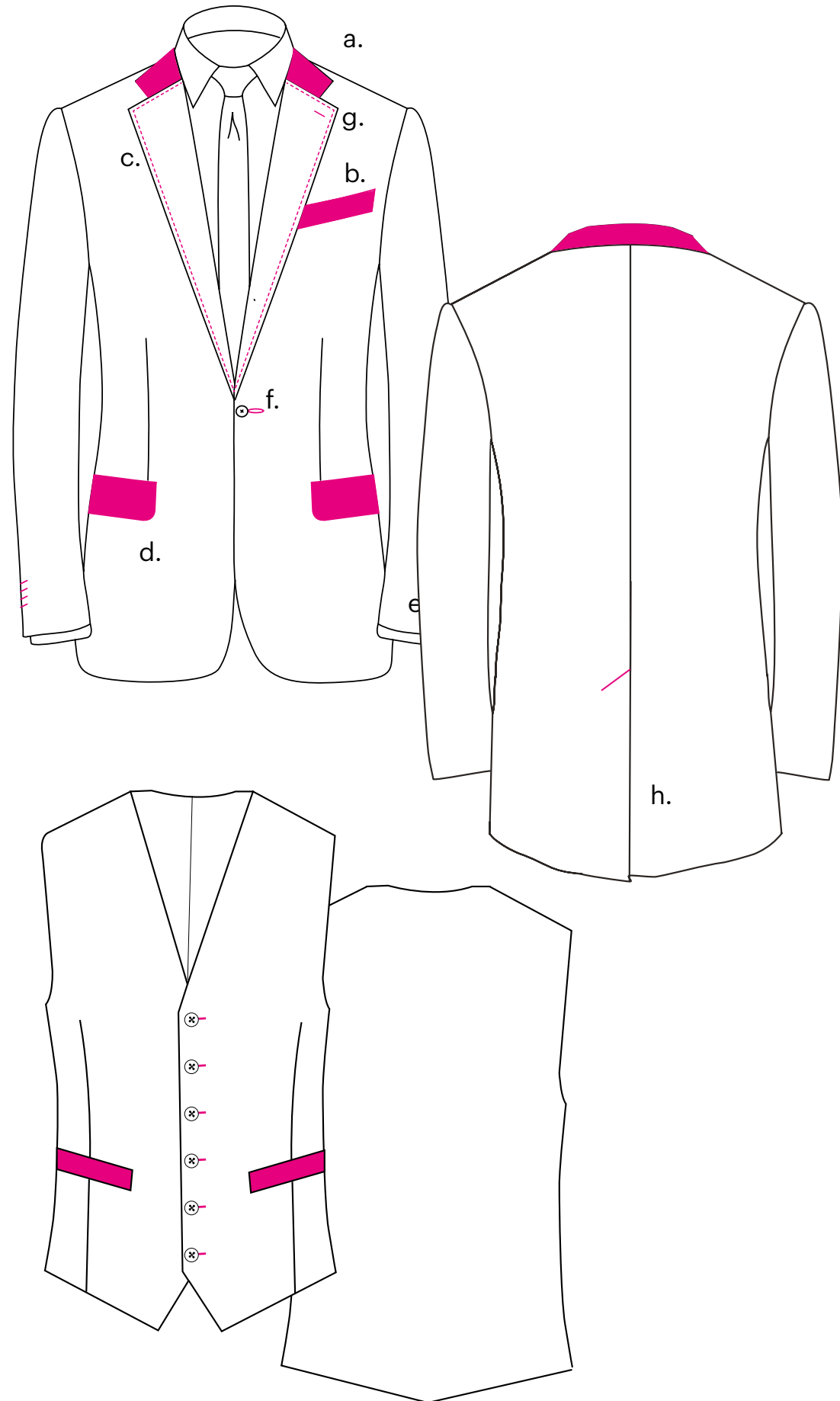


# BRANDING YOUR TAILORING

Add extra personality to your tailoring by changing trim details and adding your team branding







## Jackets

### Mens and Ladies

The pink areas show the parts of the jacket that can be changed to make your jacket feel more unique to your brand

#### a. Collar contrast colour

Add your brand colour subtly by changing the collar colour.

#### b. Contrast out of breast pocket

Change the colour of the out of breast pocket colour.

#### c. Stitch detail around the lapel

Add a coloured stitching or piping around the lapel.

#### d. External pocket

Change the colour of the external pocket colour.

#### e. Cuff button stitching

Change the colour of the stitching around the cuff buttons

#### f. Button stitching

Change the colour of the stitching around the buttons

#### g. Button stitching

Change the colour of the stitching around the lapel button hole.

#### h. Vent stitching

Depending on which jacket style you have picked you can change the vent stitching.

## Waistcoat

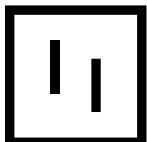
### Mens and Ladies

#### a. Pockets

Change the colour of your waistcoat pockets

#### b. Buttons

Change the stitching detail on the buttons





## Trousers

### Mens and Ladies

The pink areas show the parts of the trousers that can be changed to make your trousers feel more unique to your brand

#### a. Front pocket stitching

Add a coloured colour stitch or piping as a subtle way of bringing your brand colours into your trousers.

#### b. Button stitching

Change the colour of the stitching around the buttons.

#### c. Waistband

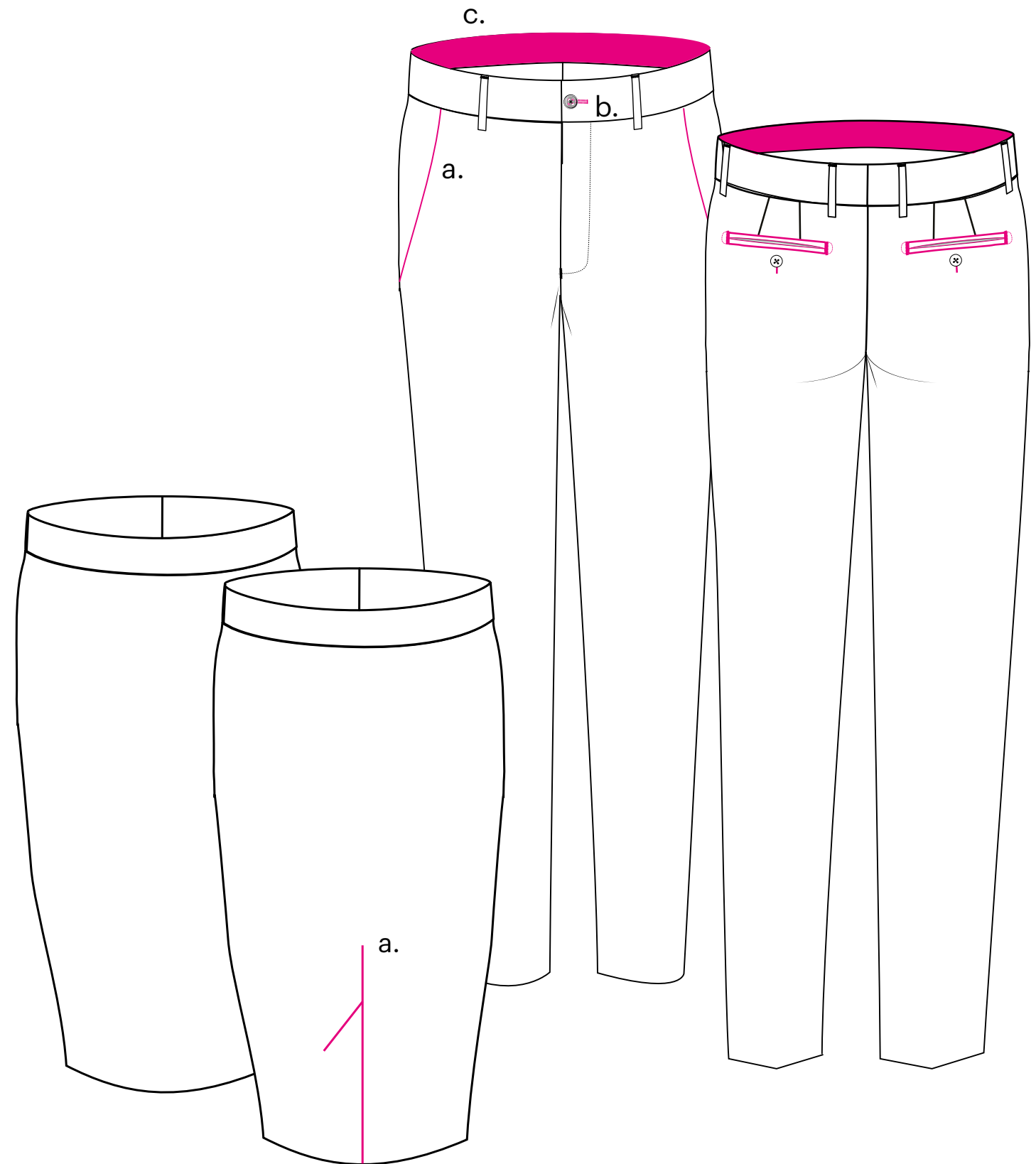
Add a waistband colour or you can even add your brand logo as a rubberised shirt grip.

#### d. Back pocket stitching

Add a coloured stitch or piping as a subtle way of bringing your brand colours into your trousers.

#### e. Button stitching

Change the colour of the stitching around the buttons



## Skirts

#### a. Vent detail

Change the stitching detail on the vent to be your brand colour. You can also change the colour of the lining which is a nice way to bring in your brand colour. (See previous linings page.)

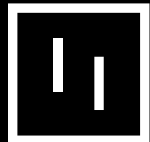




# GO MADE TO MEASURE

Looking for something completely bespoke? Choose your style, fabric and a wide range of style features to create the perfect look.

We will work with you to create a Made to Measure design of exceptional craftsmanship, meeting all your teams design requirements.



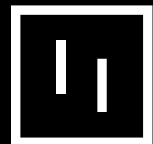


# KEEPING YOUR SUITS GREEN

We are committed to fairly and sustainably  
manufacturing corporate tailoring







The polyester used in the our collections are made from recycled plastic bottles. All the garments are then crafted in our factories using renewable energy.

One suit uses a total of 45 plastic bottles. 25 in the jacket and 20 in the trousers.

That means you can make a difference with what you wear. You are preventing plastic bottles reaching our oceans and landfill.







## **BOTTLE SOURCING**

The bottles are sourced using various socially compliant sources such as: Identified Collection Agencies, Reverse Vending Machines and collection drives at events.



## **BOTTLES TO FLAKES**

The bottles are cleaned, washed and crushed to create plastic flakes.



## **FLAKES TO FIBRE**

The flakes are melted down and extruded to make fibre.



## **FIBRE TO SUITS**

The fibre is processed into fabric then used in Everyone Collection.





# 45

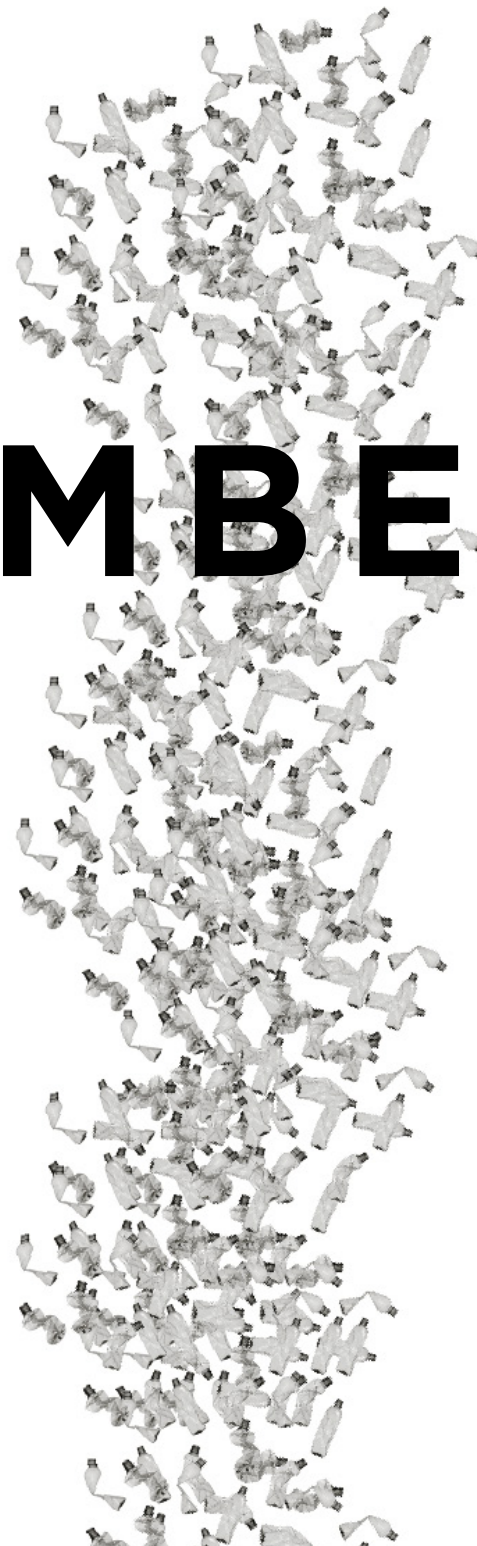
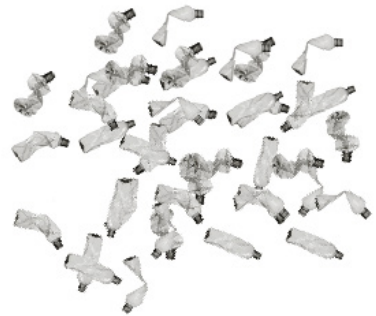
1 suit prevents 45 plastic bottles reaching landfill or our oceans.

# 675

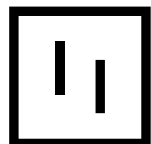
A team of 15 wearing prevents 675 plastic bottles reaching landfill or our oceans.

# 4,500

A team of 100 wearing prevents 4,500 plastic bottles reaching landfill or our oceans.



# THE NUMBERS ADD UP







As a company we adhere to several internationally recognised industry standards.

Our core cloth mill is attached to the highest standard of compliance within Oeko-Tex (STEP). We are also Gold Wrap, Sedex and GRS approved.





## LET'S TALK

---

Sam Sagar  
[sam@infinityinc.co.uk](mailto:sam@infinityinc.co.uk)

Laura Hayes  
[Laura@infinityinc.co.uk](mailto:Laura@infinityinc.co.uk)

Gavin Faulkner  
[gavin@infinityinc.co.uk](mailto:gavin@infinityinc.co.uk)